



# ELAN Forum

A Group Coaching event on  
Network Building & Collective Impact

**Ton van Vlimmeren**

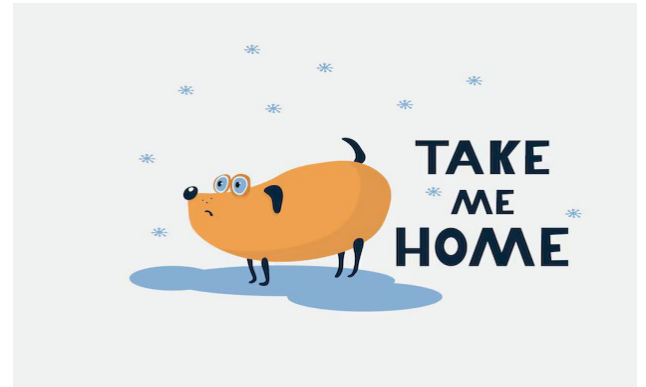
Former-President, Lifelong Member of EBLIDA

Prague 20 April 2026



# The goal is the medium

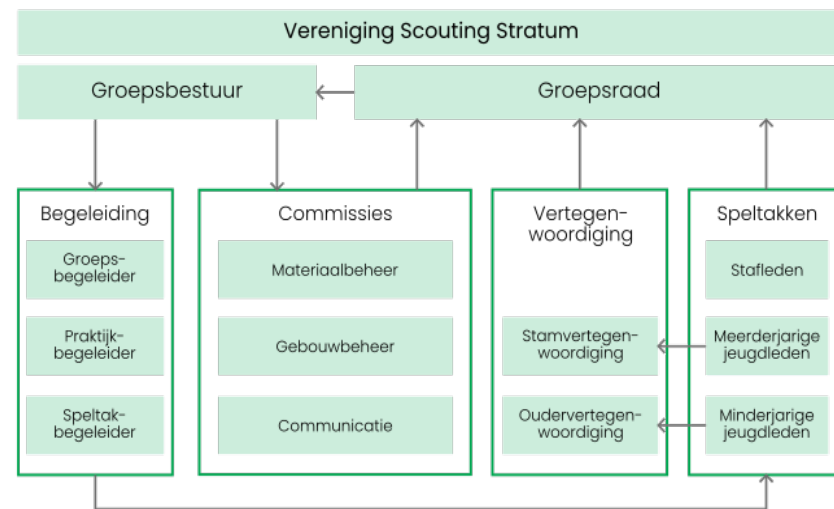
- You are networking
- We are (creating) a network
- You are the coaches
- Think what you want to take home from here





# Associations/Organizations

- E.g. EBLIDA
- Membership
- Structured: council, board, president, elections,
- Bylaws, statutes
- Representation of the field





# Network organisations

- E.g. ELAN, Public libraries 2030
- (Almost) no formal structure
- Knowing one another, personal contacts
- Coalitions of the willing, pursuing a goal
- Temporary arrangements





# Your personal network

From parties and receptions to LinkedIn

Please raise your hands

**Can you call someone if you need:**

- Advise on fundraising?
- Building plan and cost estimate?
- Help with a communication plan?
- A second opinion on HR issues?





# Exercise 1: 15 minutes

*Find 4 colleagues around you (in front of or behind you)  
Preferably choose people you do not know yet*

Tell each other:

- What are you good at in networking?
- What has been your greatest success?

Share with each other what do you find difficult about networking?



# Complexity of networks

- Finding a common goal
- Finding the right partners
- Differences in situations and possibilities
- Decisions making processes
- Representation





# Impact of networks

- What you give is what you get!
- Much value behind the scenes
  
- Do you have clear performance indicators?
- Many impact models; hardly usable.





## Exercise 2: 15 minutes

- Discuss a major challenge for your libraries:  
How could networking help you?
- How would you make that happen?
- Are there organizations/associations that could do the same/better?



## Wrap up

- Who do you add to your contacts?
- What do you take home?



Thank you!

